



Camera Monitoring

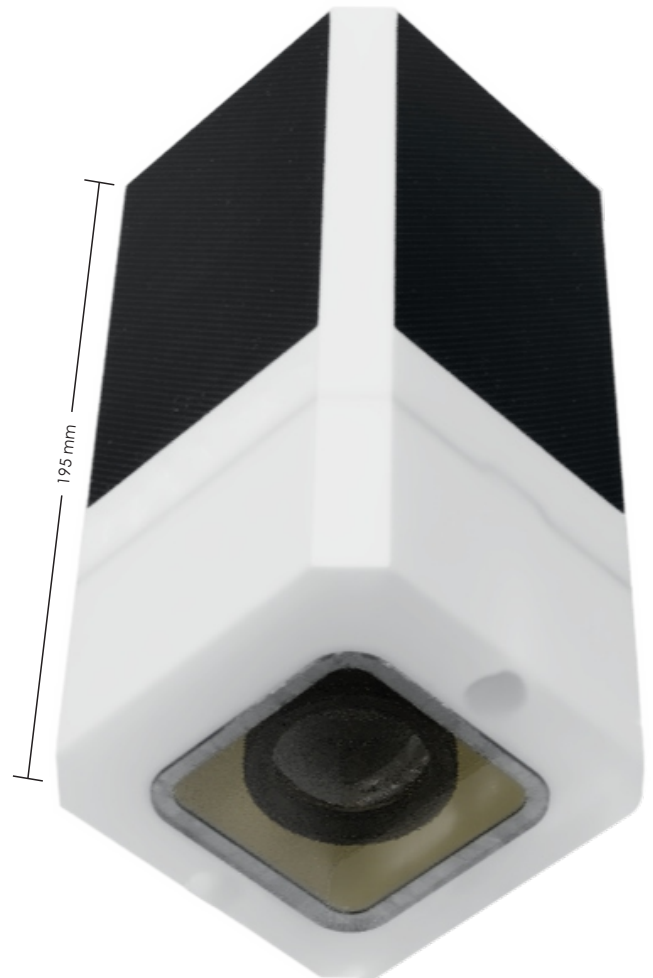
D12^{MP} Time-lapse Camera

LITTER WATCH

Enhance litter monitoring with the **D12^{MP} Time-lapse Camera**, featuring a 12-megapixel sensor for exceptional clarity and definition. Designed with a downward-facing camera, this advanced instrument is ideal for tracking surface water litter and debris over time. Images are ideal for seamlessly integrating with AI computer vision software. Capturing object size, shape, color, and texture in high definition, it is a powerful tool for pollution identification across diverse environments, from rivers and canals to reservoirs, lakes, and marine sanctuaries.

KEY FEATURES

- 01 Tailored Application:** Designed for litter monitoring
- 02 High Resolution:** Stunning 12MP resolution images
- 03 Reliable Connectivity:** Data transfer via cellular networks ensures seamless access
- 04 Versatile Capture Modes:** Snapshot, image burst, video-lapse, time-exposure
- 05 Robust Design:** Durable, weatherproof housing built for tough conditions
- 06 Easy Deployment:** Lightweight and multiple mounting options for flexible setup
- 07 Integrated Data Portal:** User-friendly portal for efficient data management and analysis



PURCHASE INCLUDES




- Free access to the **Obscape Data Portal**
- Mounting brackets
- SD card - can also be run in offline mode

Optional: Cellular global SIM
Includes €100 of data credit

D12^{MP} TIME-LAPSE CAMERA TECHNICAL SPECIFICATIONS

SPECS	
HOUSING SIZE	195 mm height x 87 mm width x 87 mm depth
WEIGHT	2 kg
PRIMARY POWER SOURCE	Solar-powered, 3 Watt
CONNECTIVITY	Cellular (4G with 2G fallback)
CELLULAR DATA LOAD	~1.5MP per message (12.3MP)
REAL-TIME DATA INTERVAL	10 minutes - 24 hours
BATTERY TYPE	1 x 18650 Lithium-ion battery
NOMINAL VOLTAGE	3.7 V

PARAMETERS	
TIME-LAPSE INTERVAL	10 – 60 minutes (User selectable)
CAPTURE MODES	Snapshot, image burst, video-lapse, time-exposure
BURST SIZE	1 to 10 images
BURST FRAME RATE	0.25 to 10 fps
DIAGNOSTIC PARAMETERS	Battery voltage, internal temperature and atmospheric pressure, signal strength

DATA STORAGE	
 CLOUD STORAGE	Free access to the Obscape Data Portal for real-time and historical data, sensor configuration, alerts
 STORAGE DURATION	Images are stored on the Obscape Data Portal for two years from date of capture - if this is not sufficient exception storage duration can be purchased
 ON-BOARD SD CARD	Data stored to the on-board SD card as a backup - or for cases where data connection is absent

OPTIONAL DATA OUTPUTS

User can specify one of the following outputs

Large	12.3MP, 4056x3040
Medium	5MP, 2595x1944
Small	2MP, 1600x1200



DATA ACCESS

SEAMLESSLY CONNECT FIELD DATA & OFFICE OPERATIONS

- 01 Image Viewer:** Clickable thumbnails and time range selector
- 02 Downloads:** JPEG Zipped, time-lapse videos (AVI or Mp4)
- 03 Forwarding:** JSON API or HTTP post
- 04 Notifications:** Offline, low battery, parameter threshold exceedance

CONTACT US

E-mail: info@obscape.com
Website: www.obscape.com

WWW.OBSCAPE.COM

Kluyverweg 1, 2629HS Delft, The Netherlands | info@obscape.com