



Water Level Monitoring

Pressure Level Gauge

LEVEL MONITORING PRECISION

The **Pressure Level Gauge** is a comprehensive solution for accurate, real-time water level observations. It features a pressure sensor mounted below the water surface and a data logger positioned above it, which can be fixed to structures such as platforms, piers or jetties. Equipped with an industry-grade pressure sensor, it accurately measures water pressure and converts it into referenced water levels data. Various cable lengths, which can be vented (no atmospheric pressure correction needed) or non-vented (atmospheric pressure correction needed) are available. Data are transmitted to the **Obscape Data Portal** and simultaneously stored on an onboard SD card.

KEY FEATURES

- 01 Industry-Grade Pressure Sensor:** Built for durability & accuracy
- 02 Solar-Powered:** Self-sustaining power source ensures uninterrupted operation
- 03 Reliable Connectivity:** Data transfer via 4G networks ensures seamless access
- 04 Compact & Robust Design:** Durable, weatherproof housing built for tough conditions
- 05 Easy Deployment:** Lightweight & multiple mounting options for flexible setup
- 06 Integrated Data Portal:** User-friendly portal for efficient data management and analysis



PURCHASE INCLUDES

- Free access to the **Obscape Data Portal**
- Mounting brackets
- SD card - can also be run in offline mode

Optional:



- 1) **Satcom upgrade** for continuous connectivity beyond cellular range
- 2) **Cellular global SIM** - Includes €100 of data credit

PRESSURE LEVEL GAUGE TECHNICAL SPECIFICATIONS

SPECS	
HOUSING SIZE	195 mm height x 87 mm width x 87 mm depth
WEIGHT	2 kg
PRIMARY POWER SOURCE	Solar-powered, 3 Watt
CONNECTIVITY	Cellular (4G with 2G fallback)
CELLULAR DATA LOAD	~8 kB per message
REAL-TIME DATA INTERVAL	5 minutes – 24 hours (User selectable)
BATTERY TYPE	1 x Lithium-ion battery
NOMINAL VOLTAGE	3.7 V

PARAMETERS	
SAMPLE INTERVAL	5 - 60 minutes (User selectable)
VERTICAL REFERENCE	Specified by user
TELEMETRY DATA QUEUE	In the event of temporary connection outages, a data queue ensures data is sent
DIAGNOSTIC PARAMETERS	Battery voltage, internal temperature and atmospheric pressure, signal strength

SENSOR	
SENSOR	Aquaread LevelLine Mini
CABLE OPTIONS	Vented (No atmospheric pressure correction needed) or non-vented (atmospheric pressure correction needed)

DATA STORAGE	
 CLOUD STORAGE	Free access to the Obscape Data Portal for real-time and historical data, sensor configuration, alerts
 ON-BOARD SD CARD	Data stored to the on-board SD card as a backup - or for cases where data connection is absent

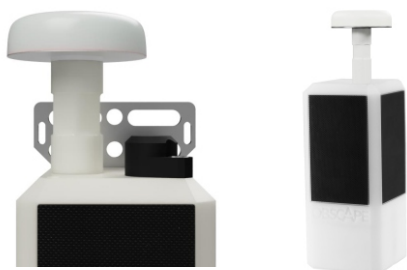
DATA OUTPUT

- Water level
- Water depth*

*Dependant on user specifying the distance between the sensor and the sea/river bed

OPTIONAL SATCOM UPGRADE

Image may vary from actual product



SATCOM SPECS

ANTENNA SIZE	Height 74.2mm / Diameter 66.5mm
NETWORK	Iridium
DATA LOAD	1 satellite credit per message
MONTHLY COST	Line rental and SATCOM credits

Satellite subscription services and credits available on request

DATA ACCESS

SEAMLESSLY CONNECT FIELD DATA & OFFICE OPERATIONS

- 01 Real-time data:** Water level, water depth (dependant on input parameters)
- 02 Download:** CSV file, graphs, PDF report
- 03 Forwarding:** JSON API or HTTP post
- 04 Notifications:** Offline, low battery, parameter threshold exceedance

CONTACT US

E-mail: info@obscape.com
 Website: www.obscape.com

WWW.OBSCAPE.COM

Kluyverweg 1, 2629HS Delft, The Netherlands | info@obscape.com